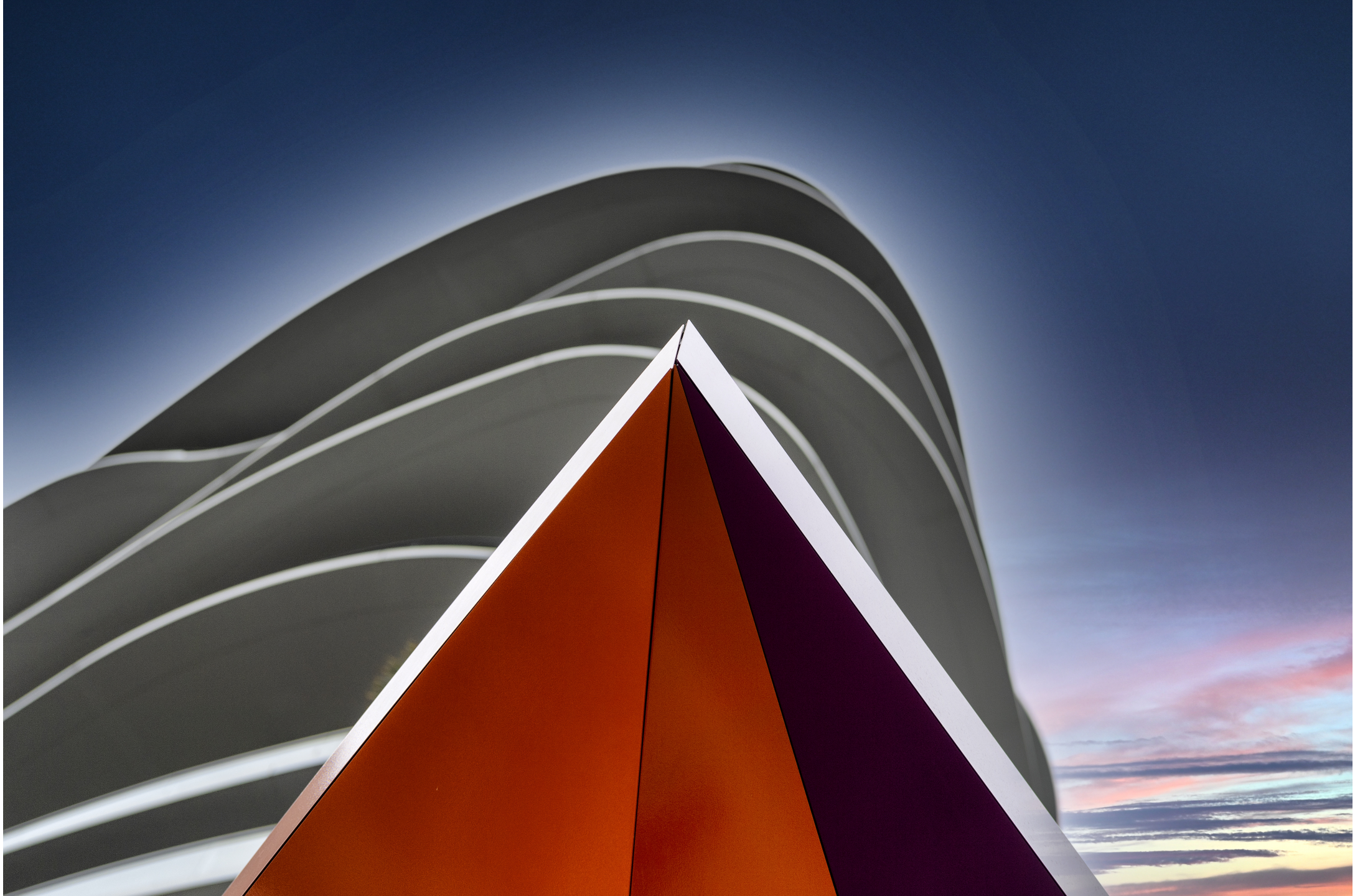


# Atelier Architecture Abstraction

# Symétrie 1



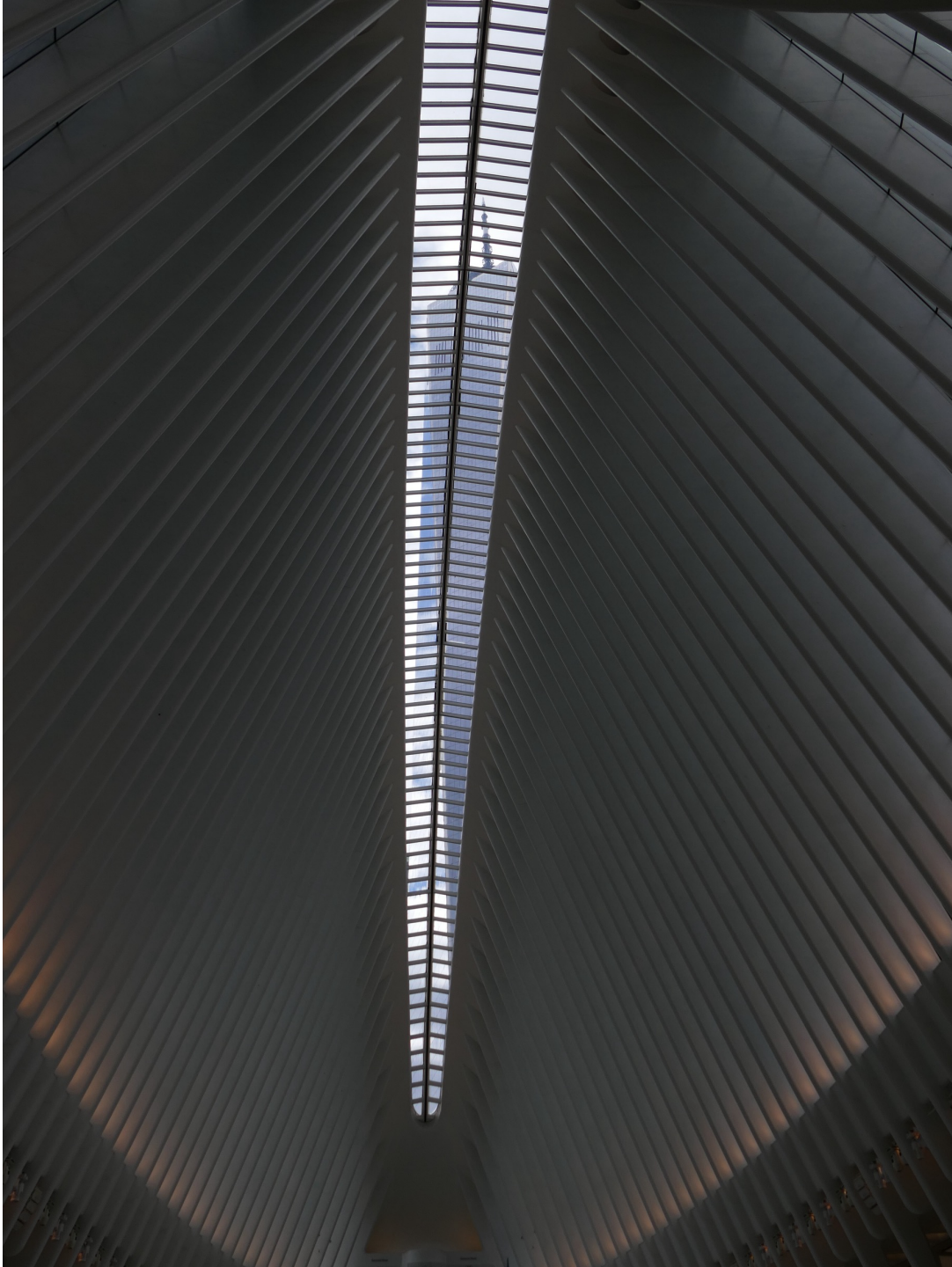




Catherine Le Scao







Anne-Marie Huiban







AIGLE

ZARA

PASSAGES  
Eaton Channel  
PASSAGES  
PASSAGES





Jean Pelegrin-Bomel















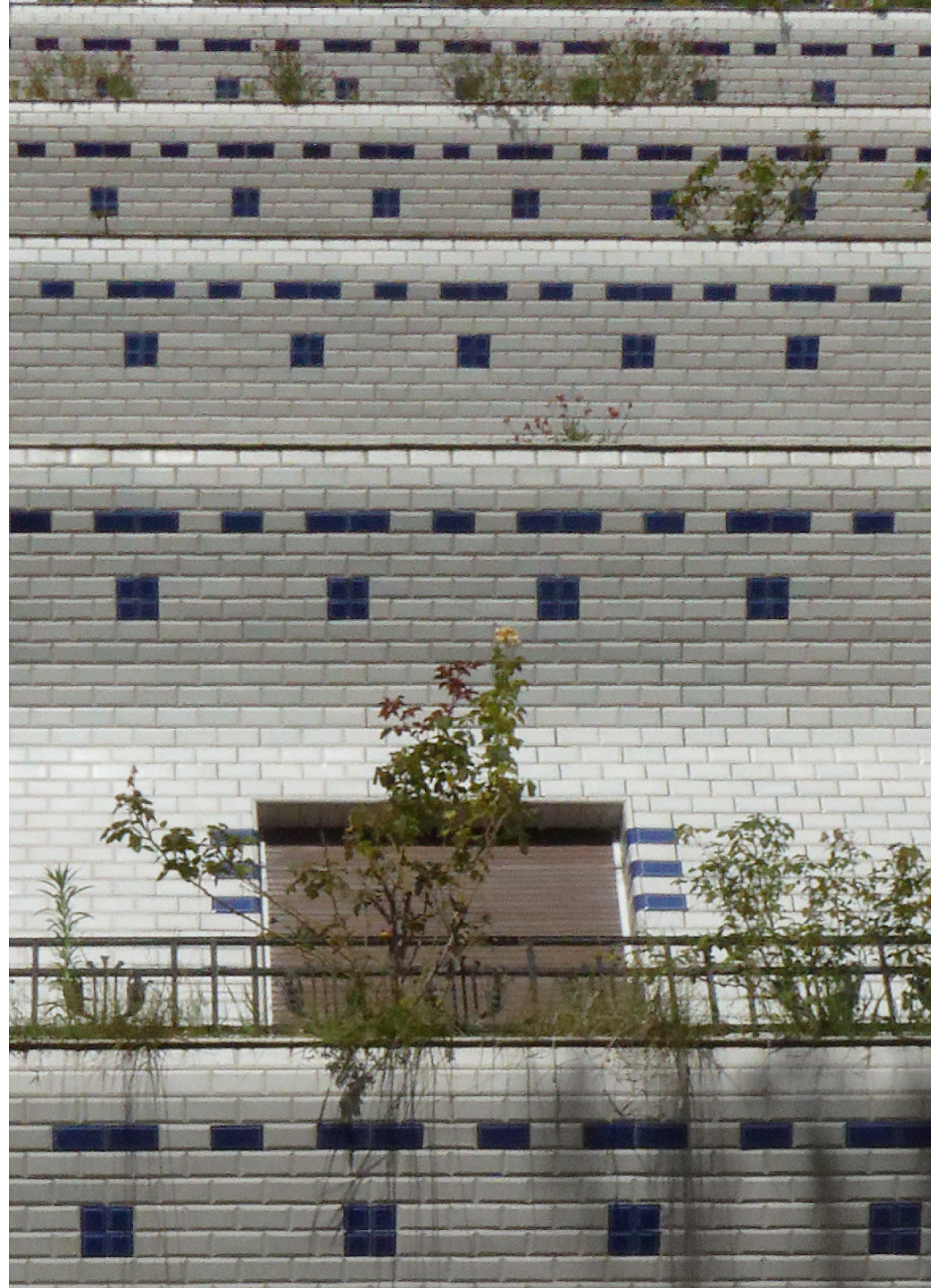


Serge Lambert





Eric Beurdeley







Hughes Legrand

















1850-1860  
1860-1870  
1870-1880  
1880-1890  
1890-1900  
1900-1910  
1910-1920  
1920-1930  
1930-1940  
1940-1950  
1950-1960  
1960-1970  
1970-1980  
1980-1990  
1990-2000  
2000-2010  
2010-2020

1850-1860  
1860-1870  
1870-1880  
1880-1890  
1890-1900  
1900-1910  
1910-1920  
1920-1930  
1930-1940  
1940-1950  
1950-1960  
1960-1970  
1970-1980  
1980-1990  
1990-2000  
2000-2010  
2010-2020

THE TEMPLE SACRILEGIOUSLY INFRINGED  
BY THE ASSOCIATION OF THE ASSOCIATION OF THE SACRILEGIOUS  
IN 1850-1860 THE ASSOCIATION OF THE SACRILEGIOUS  
IN 1860-1870 THE ASSOCIATION OF THE SACRILEGIOUS  
IN 1870-1880 THE ASSOCIATION OF THE SACRILEGIOUS  
IN 1880-1890 THE ASSOCIATION OF THE SACRILEGIOUS  
IN 1890-1900 THE ASSOCIATION OF THE SACRILEGIOUS  
IN 1900-1910 THE ASSOCIATION OF THE SACRILEGIOUS  
IN 1910-1920 THE ASSOCIATION OF THE SACRILEGIOUS  
IN 1920-1930 THE ASSOCIATION OF THE SACRILEGIOUS  
IN 1930-1940 THE ASSOCIATION OF THE SACRILEGIOUS  
IN 1940-1950 THE ASSOCIATION OF THE SACRILEGIOUS  
IN 1950-1960 THE ASSOCIATION OF THE SACRILEGIOUS  
IN 1960-1970 THE ASSOCIATION OF THE SACRILEGIOUS  
IN 1970-1980 THE ASSOCIATION OF THE SACRILEGIOUS  
IN 1980-1990 THE ASSOCIATION OF THE SACRILEGIOUS  
IN 1990-2000 THE ASSOCIATION OF THE SACRILEGIOUS  
IN 2000-2010 THE ASSOCIATION OF THE SACRILEGIOUS  
IN 2010-2020 THE ASSOCIATION OF THE SACRILEGIOUS









Patrice Ruchaud





1 3 5

